

# MAEPS CAREERS NEWSLETTER

RELATIONSHIPS - RESPECT - RESILIENCE

## Personal Guidance (BM5)

'Good career guidance is the key to social mobility: It is about showing young people - whatever their social and family background - the options open to them, and helping them make the right choices to set them on the path to rewarding future careers'

***Sir John Holman***



We recently conducted a parental careers consultation questionnaire to gather insights from you, on how we can best support our pupils during their time with us.

Your input is invaluable in ensuring pupils are prepared for their next steps, whether that be further education, apprenticeships or entering the workforce.

By looking at the elements you feel are important for your child, we can tailor our careers guidance and support services to meet their individual needs and aspirations.

Thank you for taking the time to share your thoughts with us.

For those yet to complete, please scan the QR code.

## CyberGirls Visit @ St James Park



Females make up 51% of the UK population yet only 26% of the technology sector is female and a further 5% being in leadership positions. Cyber Girls First aims to target schoolgirls aged 11-14 before their GCSEs to break stereotypes surrounding working in technology and encourage girls to take IT/Computer Science related qualifications.

The day consisted of a series of fun, engaging sessions for the girls delivered by females in the industry. With keynote speakers from Accenture, Microsoft, a zoom call with a Professor of Computer Science all the way from California and staff from The National Museum of computing at Bletchley Park.

Throughout the day the girls engaged in a series of workshops involving cybersecurity, coding robots and using AI chat bots delivered mainly by females in the industry. It provided a great insight into what it means to work in the technology sector as a female. To top it off..... the girls walked away with a GOODY BAG of treats!

#whodoesn'tloveafreegift

## Port of Blyth Student Tour and Workshop

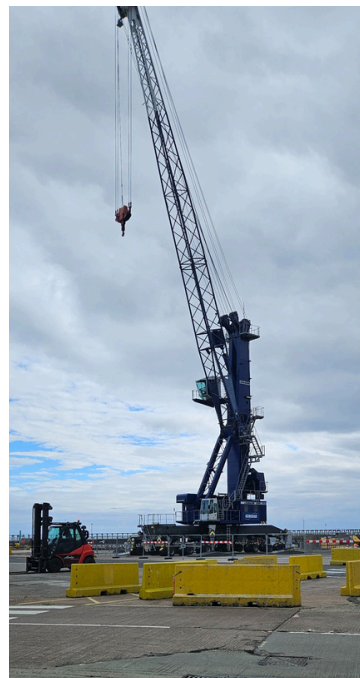
A new £11million facility in Blyth which will create opportunities for thousands of young people and adults interested in working in the clean energy sector has been granted planning permission.

The Energy Central Learning Hub will provide a range of state-of-the-art industrial training, education and STEM-related skills facilities. The new 2,396sqm Hub will include major conferencing capabilities, events space, and a lecture theatre to encourage collaboration between employers, education institutions and research facilities.

A select group of five pupils - aspiring to excel in construction and engineering - received the exclusive privilege of experiencing an insightful tour of the Port of Blyth. This hands-on experience provided a unique insight into the intersection of innovation and industry.

Furthermore, pupils participated in an interactive workshop centered on renewable energy.

Further visits to the Port of Blyth will be on offer to pupils in the upcoming academic year.



#PORTOFBLYTH  
#RENEWABLE ENERGY



## CAREERS INSIGHT - Engineering

Engineering is often the aspiration for a number of our students at MAEPS. There are so many variations and types of jobs within Engineering, something that many pupils do not understand or appreciate when considering a career in this trade. It is vital pupils take the time to explore and consider the diverse options available to them.

Civil engineers design and manage construction projects such as buildings, bridges, transport links and sports stadiums.

<https://nationalcareers.service.gov.uk/job-profiles/civil-engineer>

### **You can get into this job by:**

- a university course
- a college course
- an apprenticeship
- working towards this role

### **Entry Requirements:**

4 or 5 GCSEs at grades 9 to 4 (A\* to C) and A levels, or equivalent, for a higher or degree apprenticeship

### **Skills and knowledge**

You'll need:

- knowledge of engineering science and technology
- knowledge of building and construction
- maths knowledge
- design skills and knowledge
- thinking and reasoning skills
- complex problem-solving skills
- to be thorough and pay attention to detail
- excellent verbal communication skills
- to be able to use a computer and the main software packages confidently

Average salary (a year) £28,000 Starter to £60,000 Experienced

Typical hours (a week) 40-42